

McIntyre River

2008 Population Estimate

marked 2008 (Ad) X # repeat spawners 2009 / recaps from 2008 (Ad)

147 (Ad) X (64% of 164) 105 / 10 (Ad)

2008 POPULATION ESTIMATE = 1543 + - 878 (95 % confidence)

2009 Population Estimate

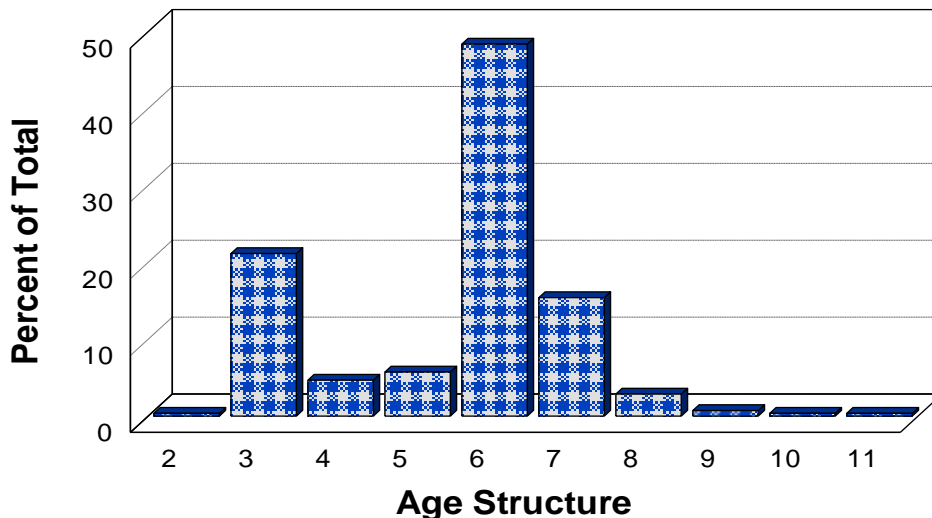
marked 2009 (RV) X # repeat spawners 2010 / recaps from 2009 (RV)

164 (RV) X (71% of 280) 199 / 26 (RV)

2009 POPULATION ESTIMATE = 1255 + - 412 (95 % confidence)

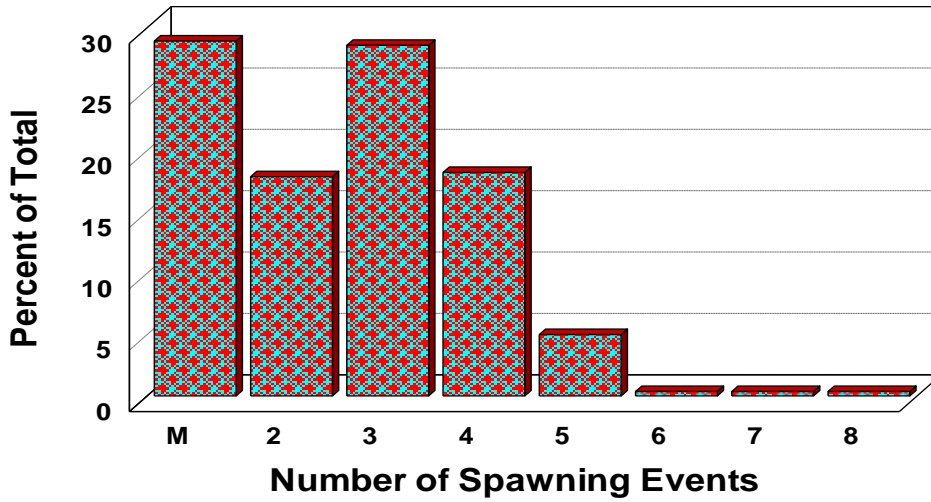
McIntyre River Steelhead

Age Structure 2010



MacIntyre River Steelhead

Spawning Events 2010



MacIntyre River Steelhead

Lake Years at Maturity

